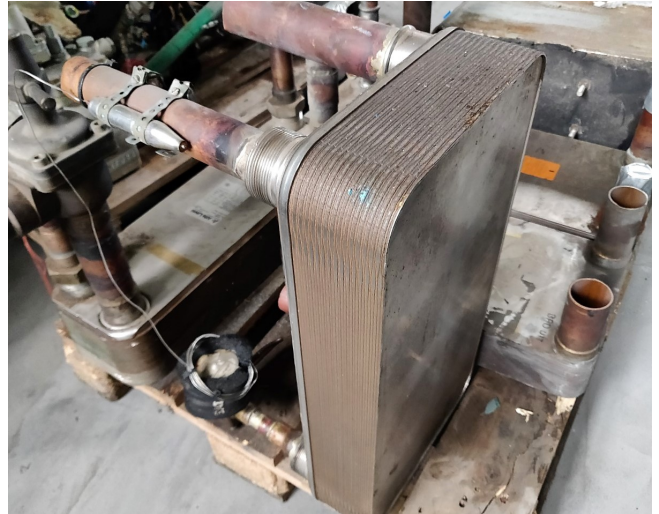


GEA WP 757M-30

Specifications

Merk	GEA
Type	WP 757M-30
Product type	BHE
Size	370x280x540 mm (LxWH)
Layers / Cassettes	15 Layers
Volume	volume side (1): 4,34L
Remarks	Width plate: 4,9 cm
Stock	1



Description

Used GEA WP 757M-30

Used Heat Exchanger built by GEA type WP 757M-30 // 15 Layers // Volume side (1): 4,34L // Width plate: 4,9 cm // Sizes: 370x280x540 mm (LxWH)

